


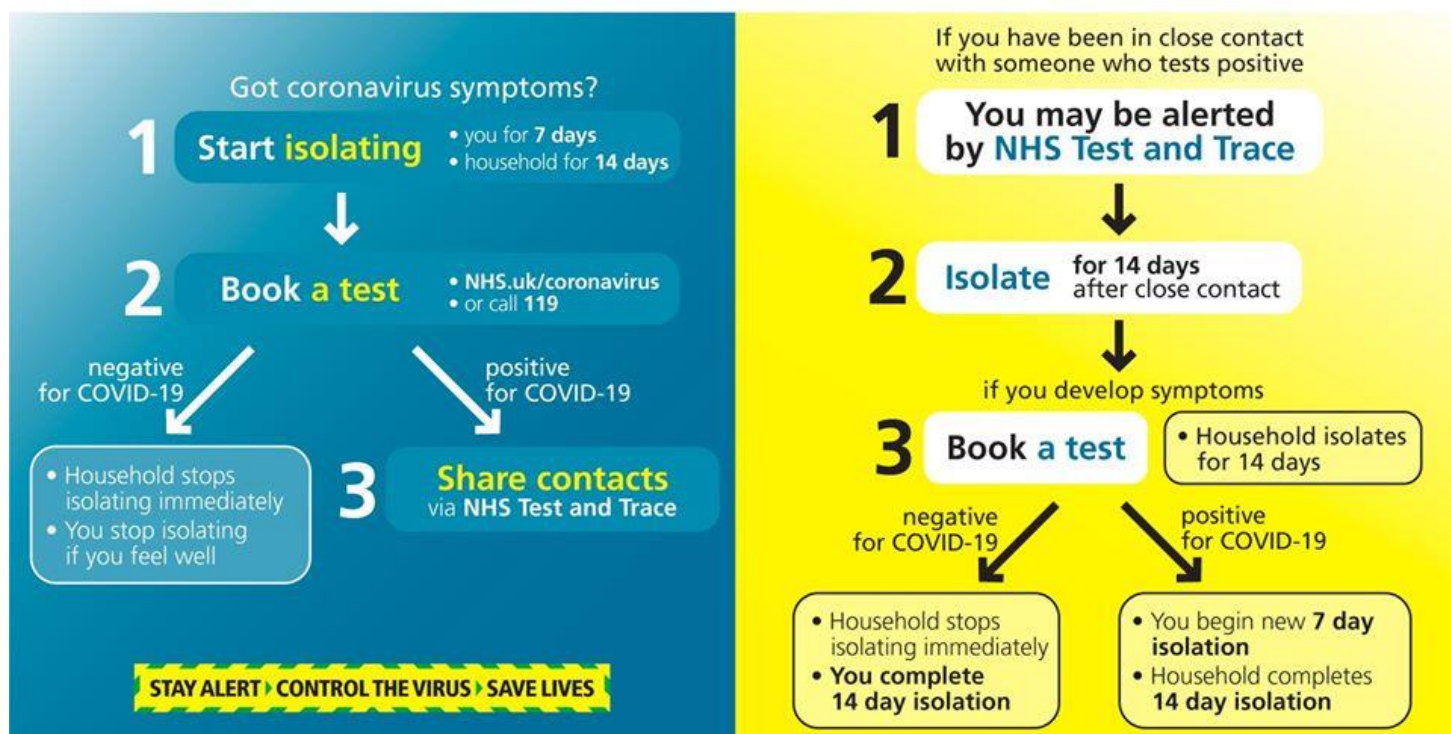
What should I do if my child is unwell?

Are they showing signs of COVID-19?

Follow the flowchart as well as emailing or calling the school office to inform us. In the text, 'you' refers to the person with symptoms.

 HM Government

 NHS Test and Trace



Do they have symptoms unrelated to COVID-19?

If your child shows symptoms of other illnesses, please follow the **usual school protocols** for reporting absence as outlined below:



Either email the office on office@gloryfarmschool.co.uk or call on 01869 244050 and leave a message, outlining your child's symptoms.